



CAPABILITY SUMMARY 2021

RUREX is a solutions-based company that focuses primarily on the operation of the JB Range located near Byrock NSW.

This facility can be utilised to find your Out Of The Box (OOTB) solution for projects based around Testing, Research and Disposal (TRD) of explosives, precursors and dangerous goods.

CURRENT OPERATIONS

Testing, Research and Disposal + OOTB projects:



Testing

RUREX are the leading independent facility for Transport of Dangerous Goods as per the UN manual of tests and criteria.

(contact us for your specific test requirements)

Research

RUREX are a partner in research projects with our customers, the ability to tailor the site and support requirements to suit customer needs is a stand out feature of RUREX.

Disposal

RUREX is a specialised disposal operator, working closely with regulators and customers to find solutions for disposal of many different dangerous goods. Including inoperable dangerous goods cylinders.

OOTB

Out of the box projects arise in all aspects of RUREX operations and we find a way to support and assist in all aspects / areas of these projects. They are a speciality of RUREX and Ryan who has managed and created many OOTB concepts throughout his career.

ENVIRONMENTAL FOCUS

RUREX operates with a strong environmental and sustainable focus. If a product can be recycled or if re-life solutions are available they are the preferred solution. RUREX operates under EPA protection of the environment operations (POEO) licence.

THE FACILITY

The RUREX JB Range @Byrock operates under a SafeWork NSW licence to manufacture and has facilities such as: 4 firing areas, explosives / dangerous goods storage, heavy machinery plus fully equipped preparation and testing rooms.

Range and Structures:

Multiple authorised explosives storage magazines (with room for further expansion)

4 range blasting areas (pits) allowing for small to large scale operations. Protected firing location (Main bunker) a firing board with multiple fixed firing lines communicating with firing and equipment shelters distributed across the range (pits).

Testing Systems and equipment:

BAM Fallhammer

BMA Friction Tester

Koenen Test system

Modified Vented Pipe Test system with remote management of controls and data.

Time Pressure Test system

Velocity of detonation (VOD) testing system

Preparation room with equipment such as: overhead mixer, impellers, hot water bath, pH meter, balances, viscometer

Dataloggers

Multiple blast monitors for air and vibration

Cameras and tripods

Vehicles and machinery:

6 tonne loader with fork, bucket, auger (SWL 2000kg)

5.5 tonne excavator with tilt bucket and ripper.

6 tonne truck with 3 tonne crane

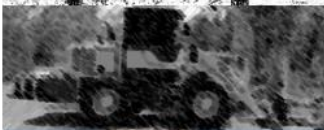
Shotfirer's vehicle (range explosives ute)

Ancillary equipment i.e. generators, cement mixers, ventilation fans

Labour / Assistance:

Dedicated / specialised shotfiring services

- General labour for building / erection
- Equipment / service available such as and not limited to:
 - Laser level
 - Hand tools, ladders
 - Welding
 - Supply management for ordering - steel, timber, fixings etc
- Low voltage electrical
- Communications i.e. by wire, RF, UHF, WIFI





WHO IS BEHIND RUREX

Ryan Esam is the Managing Director, Range Coordinator and the backbone of the RUREX culture.

After a history of remote pastoral work across South Australia, Northern Territory and Queensland Ryan moved into the explosives industry over 25 years ago and has specialised in the following areas:

Shotfiring:

- Licenced to conduct blasting operations in 4 states of Australia
- Small scale and close proximity blasting
 - Within CBDs of cities
 - Close proximity to structures; towns, buildings, mining and quarry infrastructure
 - Environmentally sensitive blasting management, involving design / blasting and also community engagement
- Large scale blasting
 - >1 Million BCM blasts.
 - >1000 hole blasts

Advanced Technology:

Ryan has been at the forefront of blasting technology for greater than 15 years, a primary focus has been the global industry uptake of electronic detonator technology (EDT). Having worked for the 3 main manufacturers of EDT places Ryan as one of the most experienced global entities on the manufacture, introduction, deployment, use, and incident investigation of EDT. Ryan will continue to be an advocate for this technology that is increasing the safety and accountability of explosives use across the world.

Commercial

For nearly a decade Ryan managed commercial growth of a dedicated EDT company in Australia. Focusing on culture and customer as the key priorities, Ryan constructed business growth, HR growth plus marketing and communications structure across Australia and beyond. Working closely with other global regions as well as the international manufacturing facility, Ryan was incorporated across all aspects as the business.

OTHER OPERATIONS

RUREX also operates a pastoral property with a focus on sustainable pastoral management.

RUREX can provide earthmoving solutions specialising in small to mid-sized earthmoving projects.

We look forward to assisting you with your next security sensitive, confidential, dangerous goods projects.



Ryan Esam

Managing Director / Range Co-Ordinator

RUREX Pty Ltd

